

REV	DATE	DESCRIPTION	DRAWN	APP'D
A	07/01/15	WORK SET DIMENSIONS ADDED	PS	MJT
B	17/01/15	WATER NUMBERING ADDED	PS	MJT
C	26/01/15	DOOR NUMBERING ADDED	PS	MJT
D	27/01/15	SHOWER WATERING REVISED	PS	MJT
E	02/04/15	ELECTRICAL SPECIFICATION AMENDED	PK	MJT
F	02/04/15	ELECTRICAL SPECIFICATION AMENDED	PK	MJT
G	02/04/15	ELECTRICAL SPECIFICATION AMENDED	PK	MJT
H	17/02/15	SMOKE DETECTORS REVISED	PS	MJT
I	22/02/15	COMMON SWAN LANDING REVISED	PS	MJT
J	22/02/15	COMMON SWAN LANDING REVISED	PS	MJT
K	19/04/15	FIRE SENSOR REMOVED	PS	MJT
L	20/08/15	NOTE ADDED RE STAIR LANDING DOOR	PS	MJT
M	20/08/15	SMOKE DETECTORS & ENTRANCE DOOR	PS	MJT
N	17/09/15	SMOKE DETECTORS & ENTRANCE DOOR	PS	MJT
O	11/12/15	Updated in line with schedule for stair and lobby removed and mechanical included to elevators. Fireman's switch included at entrance.	KH	MJT

**PATH BRAE, KIRKLISTON
RESIDENTIAL DEVELOPMENT**

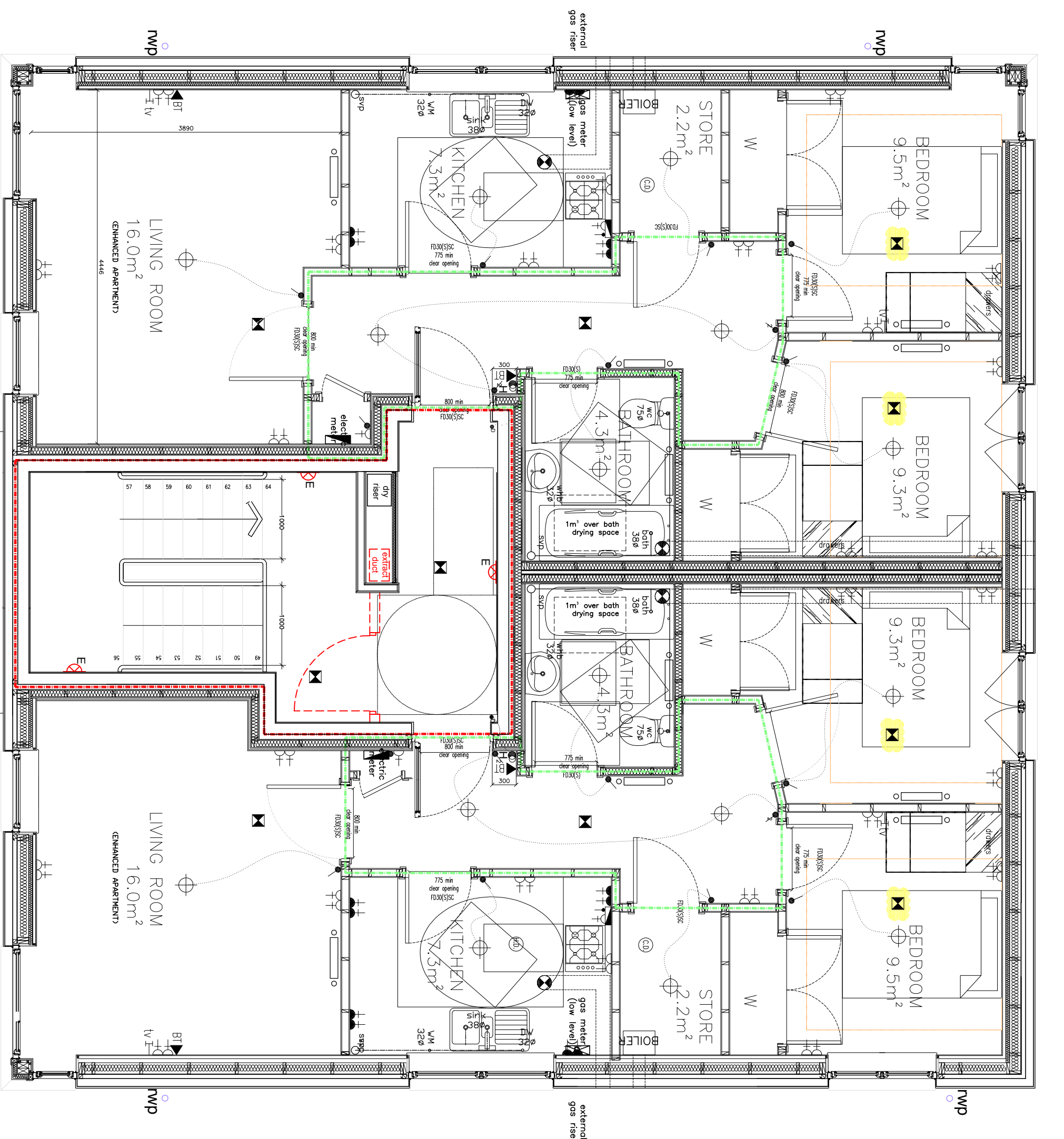
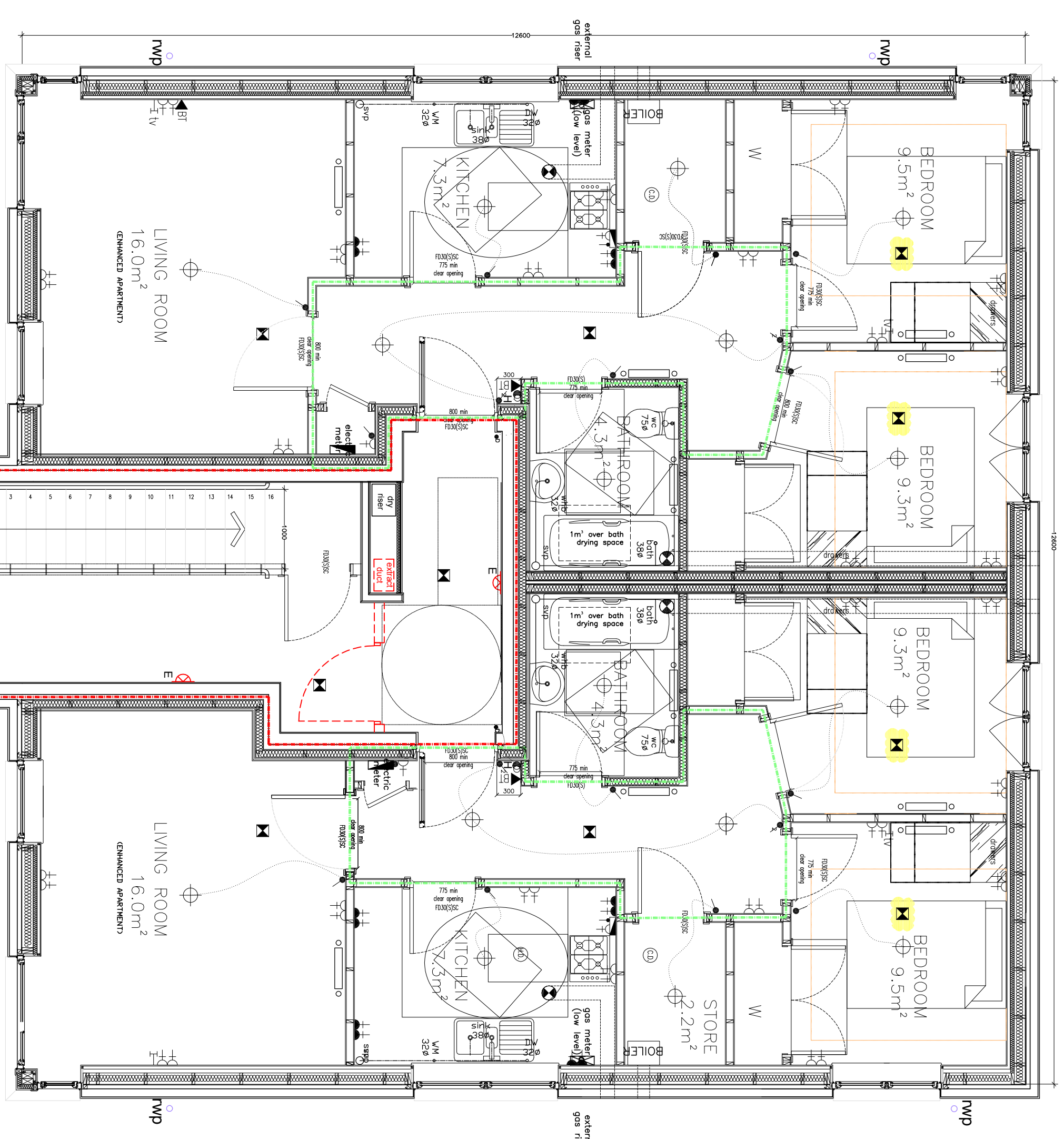
**BLOCK 1 – FLOOR PLANS
GROUND, 1ST AND 2ND FLOORS**

SCALE: 1:50 @ A1

DATE: 11/12/15

Cruden Homes (East) Ltd
BARBTON HOUSE
WESTBURN AVENUE
EDINBURGH
EH14 5NH

TELEPHONE: 0131 443 3662
DRAWING NO: 2366 C (CA) 110 REV 0



ELECTRICS & FITTINGS KEY

- gas meter
- electricity meter
- two way light switch
- three way light switch
- pendant light
- wall light(-emergency)
- down lighter
- twin 13amp flush socket outlet unit (high level)
- cooler control
- telephone point
- tv satellite/cable point
- mechanical extract fan
- heat detector
- smoke detector, mains wired & linked in series with battery back up
- carbon monoxide detector
- doorbell chime and bell
- fused spur with high level switch
- entry handset
- short duration wall
- medium duration separating wall
- indicative emergency lighting – to be designed to BS 5266 Part 1:2005 as read in association with BS 5266 Part 7: 1999 (BS EN 1528: 1999).
- fireman's switch, manual override control for AOVs