

**ELECTRICS & FITTINGS KEY**

- gas meter
- electricity meter
- two-way light switch
- three-way light switch
- pendant light
- wall light
- down lighter
- two 13amp flush socket outlet unit (high level)
- cooler control
- telephone point
- t.v. satellite/cable point
- mechanical extract fan
- heat detector
- smoke detector, mains wired & linked in series with battery back up
- Carbon monoxide detector
- Doorbell chime and bell
- Fused spur with high level switch
- Entry Headset
- Short duration wall Medium duration separating wall
- Indicative emergency lighting – to be designed to BS 5266: Part 1:2005 as read in association with BS 5266: Part 7: 1999 (BS EN 1838: 1999).
- Fireman's switch manual override control for AGVs

© I  
Co-ordinated Project Information

NOTES/REVISIONS

REV	DATE	DESCRIPTION	DRAWN	APP'D
A	11/12/14	WATER POSITIONS ADDED	PS	MJT
B	11/12/14	WINDON NUMBERS ADDED	PS	MJT
C	21/01/15	WINDON NUMBERS ADDED	PS	MJT
D	21/01/15	WINDON NUMBERS ADDED	PS	MJT
E	21/01/15	WINDON NUMBERS ADDED	PS	MJT
F	21/01/15	WINDON NUMBERS ADDED	PS	MJT
G	21/01/15	WINDON NUMBERS ADDED	PS	MJT
H	21/01/15	WINDON NUMBERS ADDED	PS	MJT
I	21/01/15	WINDON NUMBERS ADDED	PS	MJT
J	21/01/15	WINDON NUMBERS ADDED	PS	MJT
K	21/01/15	WINDON NUMBERS ADDED	PS	MJT
L	21/01/15	WINDON NUMBERS ADDED	PS	MJT
M	21/01/15	WINDON NUMBERS ADDED	PS	MJT
N	21/01/15	WINDON NUMBERS ADDED	PS	MJT
O	21/01/15	WINDON NUMBERS ADDED	PS	MJT
P	21/01/15	WINDON NUMBERS ADDED	PS	MJT
Q	21/01/15	WINDON NUMBERS ADDED	PS	MJT
R	21/01/15	WINDON NUMBERS ADDED	PS	MJT
S	11/12/15	WINDON NUMBERS ADDED	PS	MJT

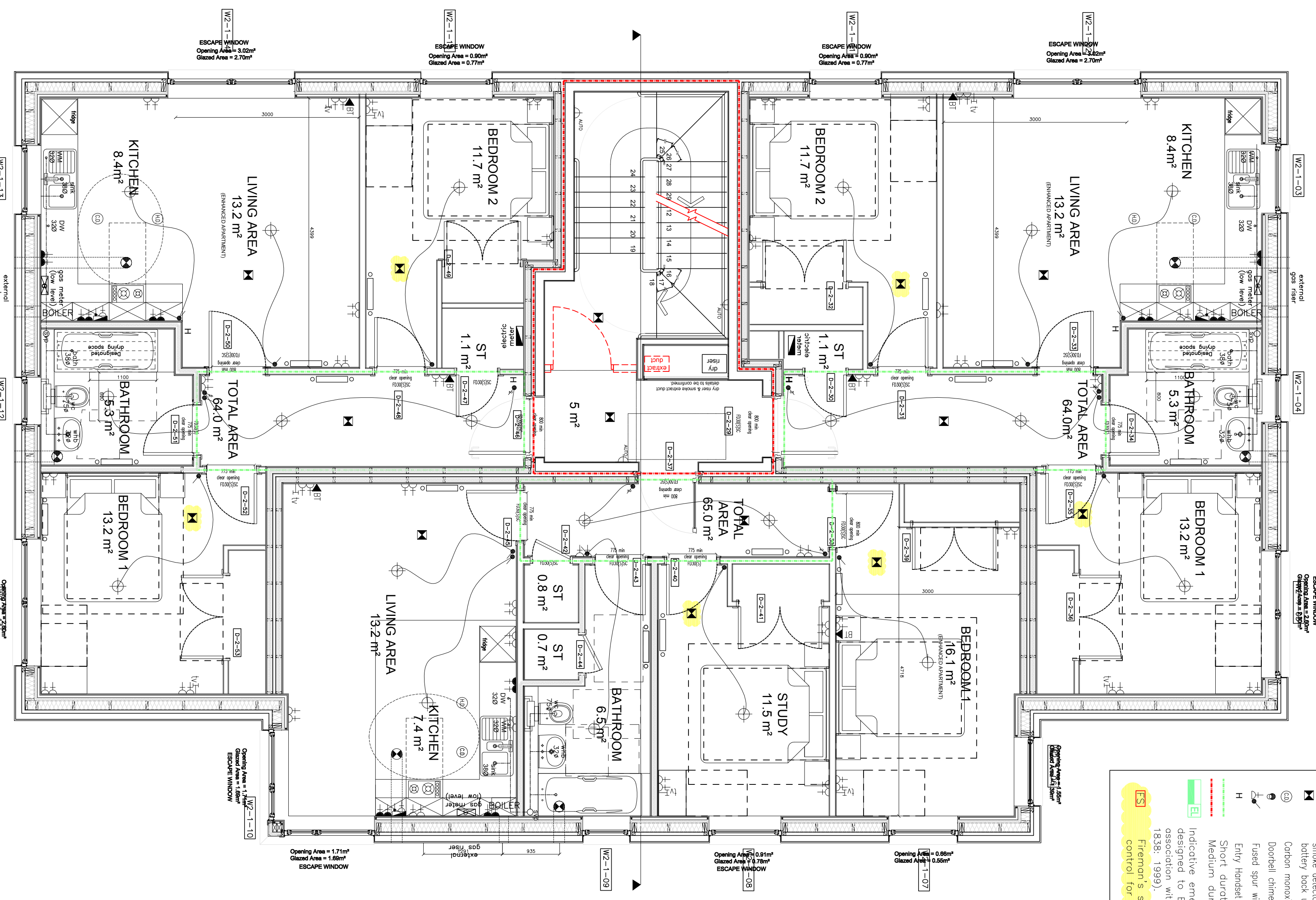
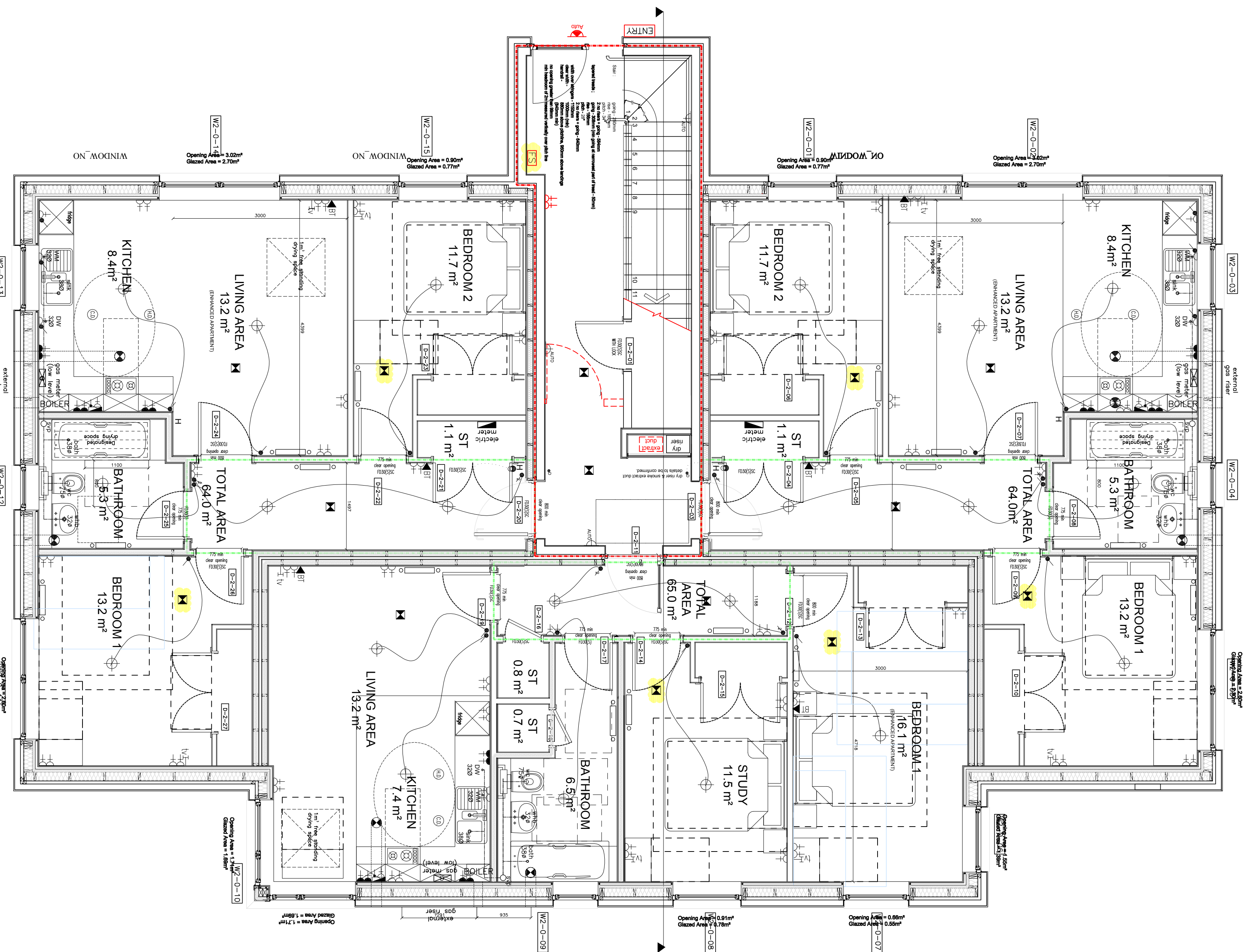
**PATH BRAE KIRKLISTON RESIDENTIAL DEVELOPMENT**

**BLOCK 2 – FLOOR PLANS GROUND AND 1ST FLOORS**

**Cruden Homes (East) Ltd**  
BARBERTON HOUSE  
WESTBURN AVENUE  
EDINBURGH  
EH14 5NH

TELEPHONE: 0131 442 3862

2366 C (CA) 120 rev S



Ground floor

1st floor